



RETIREMENT AT ITS FINEST | CAPE TOWN - NORTHERN SUBURBS

NOW SELLING

1 & 2 Bedroom Apartments including basement parking

NOW SELLING

Final Phase Apartments



PROPERTY GROUP

www.larecolte.co.za

Sophisticated living FOR ACTIVE SENIORS

La Récolte Retirement Village is a luxury lock-up-and-go estate presenting the perfect blend of tranquil living and city amenities. Offering state-of-the-art security and facilities, as well as exquisite finishes. La Récolte brings residents an active retired lifestyle with every comfort and convenience.



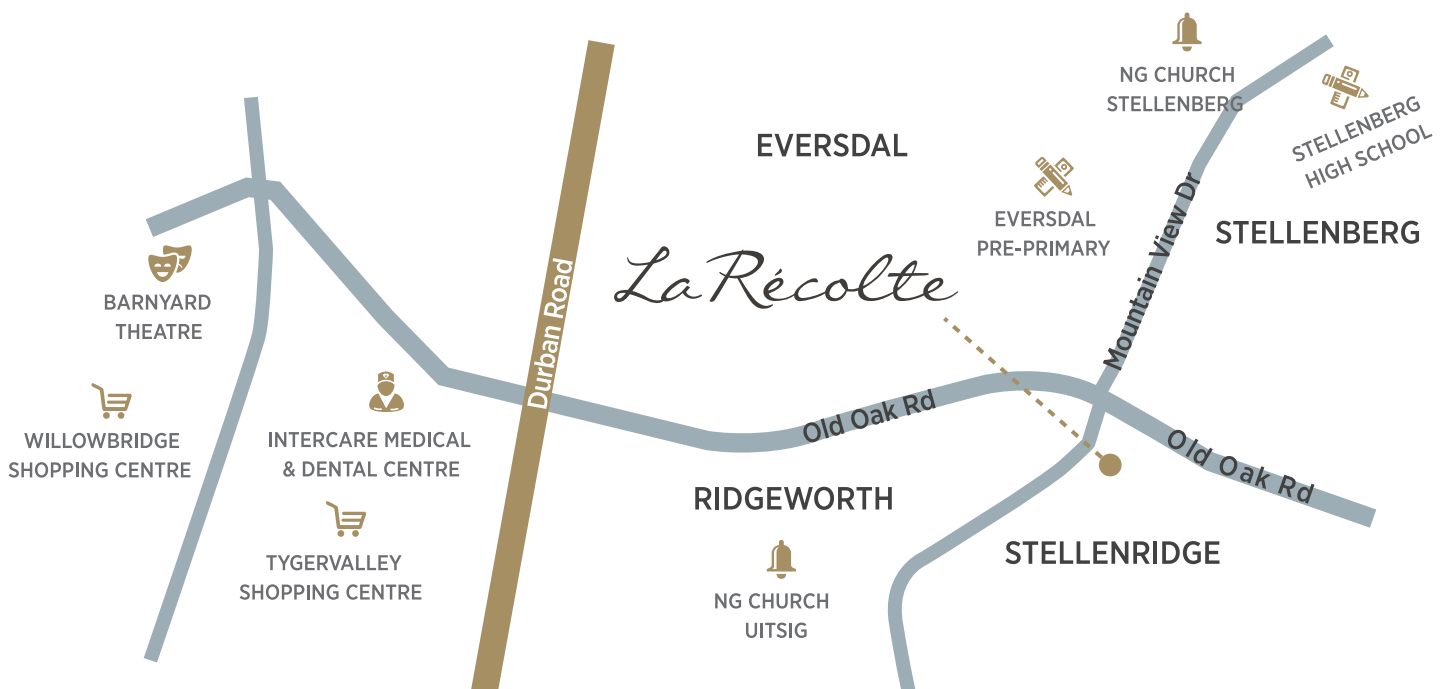
La Récolte AT A GLANCE

- Medical panic buttons in each home.
- 24-hour security with CCTV cameras, access-controlled gate.
- Estate Clubhouse offering a variety of activities.
- Access to caring nursing staff and quality medical care.
- Conveniently located close to a variety of amenities.
- Fibre optic connectivity with complimentary phone.
- Granite counter tops.
- Laminate flooring, tiles and carpets.
- Landscaped gardens.
- Affordable, stable levies.
- Daily meals
- Laundry facilities



Location

La Récolte Retirement Village is ideally situated on the corner of Old Oak Way and Mountain View Drive, Stellenberg, close to Tyger Valley Shopping Centre, Willowbridge, Med-Clinic hospitals, doctors and cosy restaurants.



ASSISTED LIVING & FRAIL CARE

CLUBHOUSE



Site Development Plan

BLOCK D - GROUND FLOOR



GROUND FLOOR PLAN
SCALE 1:100

Site Development Plan

BLOCK D - FIRST FLOOR

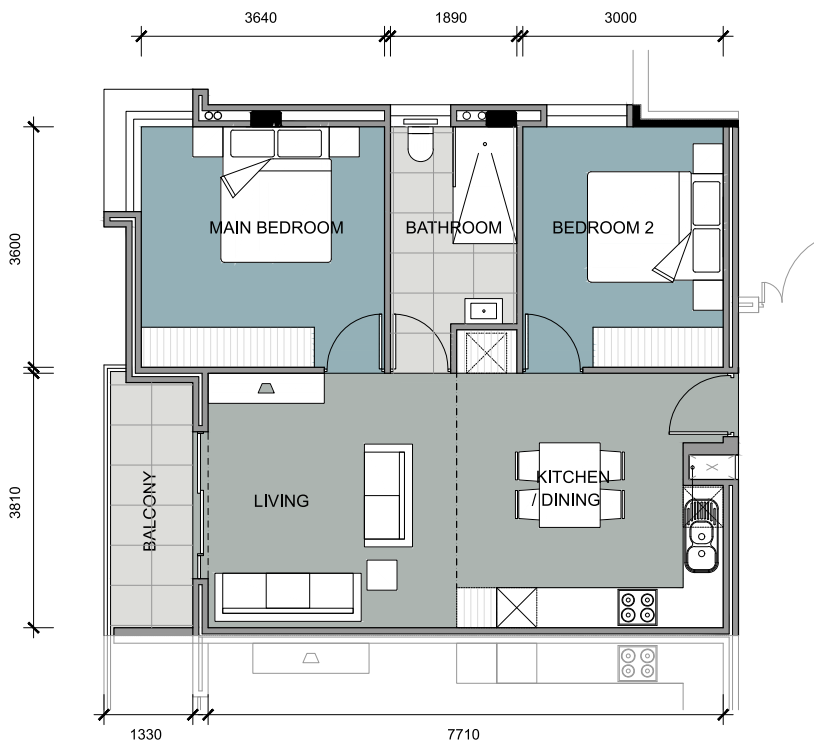


BLOCK D - SECOND FLOOR

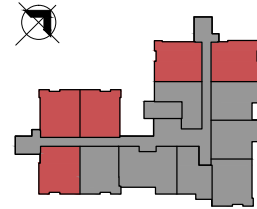


Unit Types

UNIT TYPE - D1



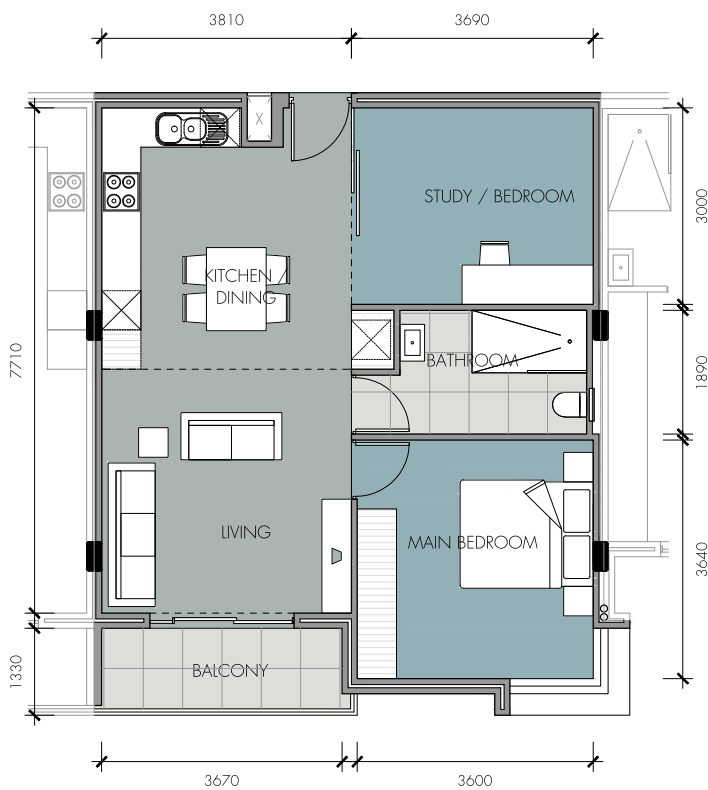
architech^o



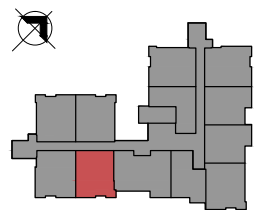
FLAT	- 70 sqm
BALCONY	- 5 sqm
TOTAL	- 75 sqm



UNIT TYPE - D2



architech^o

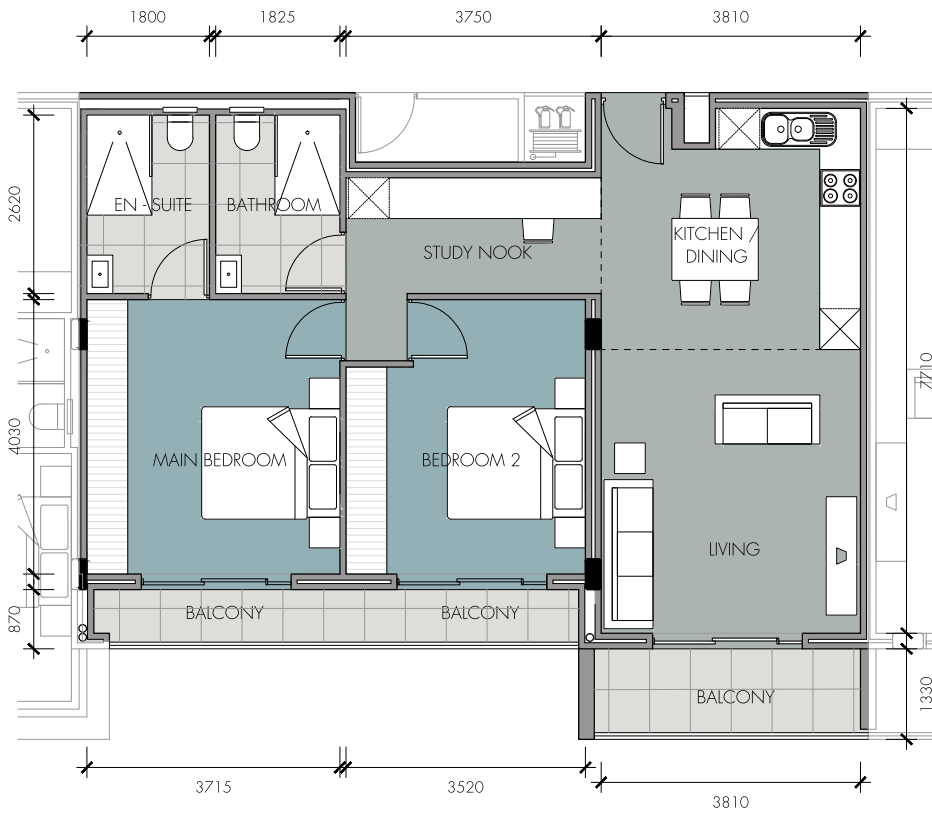


FLAT	- 68 sqm
BALCONY	- 5 sqm
TOTAL	- 73 sqm

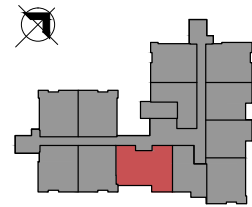


Unit Types

UNIT TYPE - D3



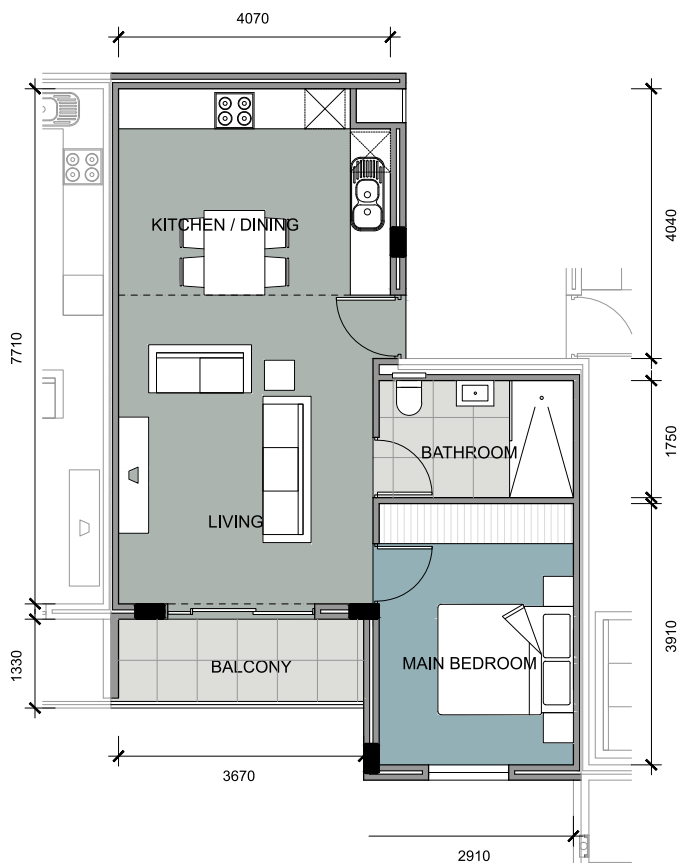
architech^o



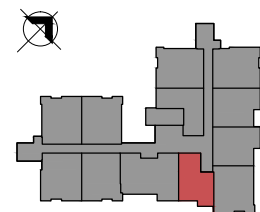
FLAT	- 84.5 sqm
BALCONY	- 11.5 sqm
TOTAL	- 96 sqm



UNIT TYPE - D4



architech^o

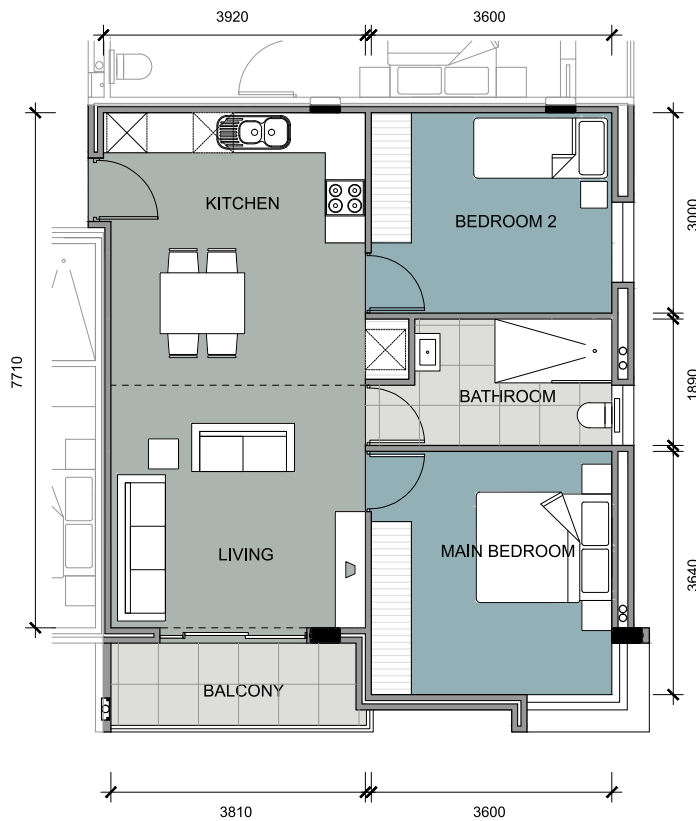


FLAT	- 55 sqm
BALCONY	- 5 sqm
TOTAL	- 60 sqm

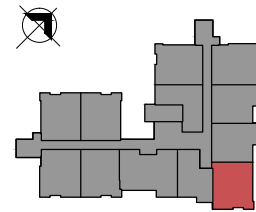


Unit Types

UNIT TYPE - D5



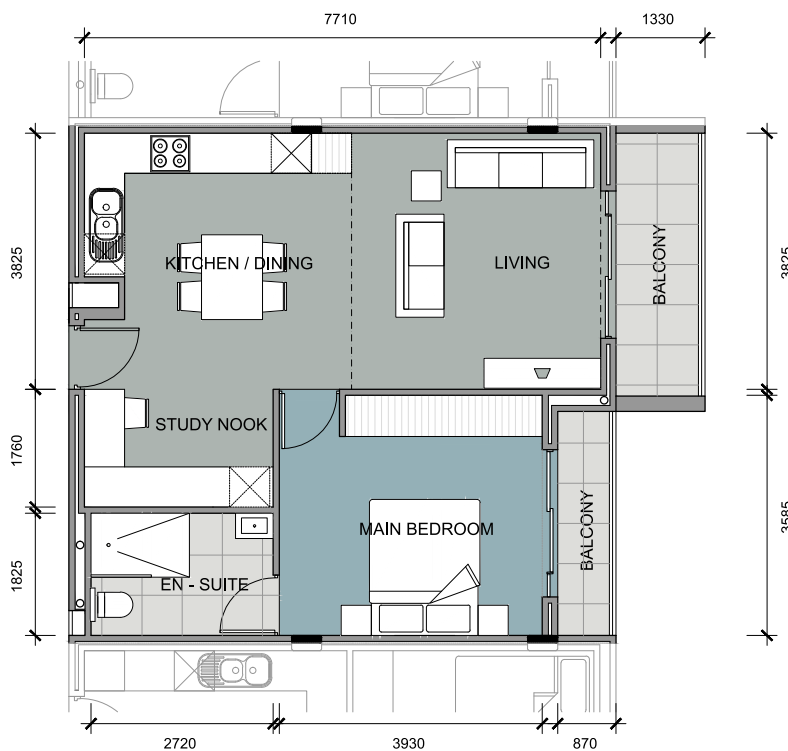
architech^o



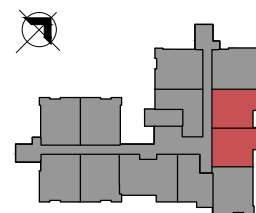
FLAT - 70 sqm
BALCONY - 5 sqm
TOTAL - 75 sqm



UNIT TYPE - D6



architech^o

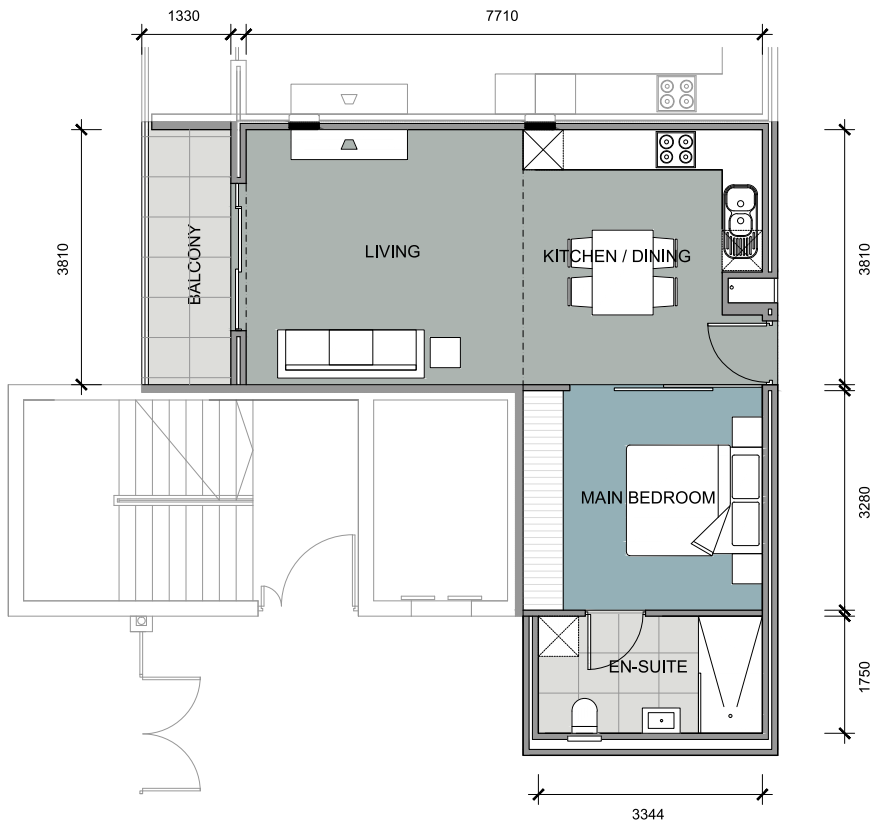


FLAT - 60 sqm
BALCONY - 8 sqm
TOTAL - 68 sqm

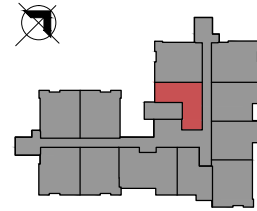


Unit Types

UNIT TYPE - D7



architech^o



FLAT	- 55 sqm
BALCONY	- 5 sqm
TOTAL	- 60 sqm



Clubhouse

The Clubhouse will boast a variety of amenities such as a state-of-the-art industrial kitchen which will be managed by Feedem Pitseng. Meals may be enjoyed in the modern dining room, where residents may either nestle close to the cosy fireplace in winter or open the stacking doors to view the spectacular, ever-changing, mountains. The outdoor braai area will make it possible for them to have a large family braai or enjoy boerewors with the rugby. On the ground floor residents will find an equipped gym with his and hers bathrooms; a library and games room, as well as a beauty salon. These facilities will be open to all residents and their guests.



Contact: Jessica Kolver 074 888 2132 | jessica@c4propertygroup.co.za | www.larecolte.co.za